

# TEST REPORT

**Applicant:** Shenzhen Huafurui Technology Co., Ltd  
**Address:** Unit 1401 & 1402, 14/F, Jinqi Zhigu Mansion (No. 4 Building of Chongwen Garden), Crossing of the Liuxian Street and Tangling Road, Taoyuan Street, Nanshan District, Shenzhen, P.R. China

**The following sample(s) was/were submitted and identified on behalf of the client as:**

Product name: Smartphone  
Model: J20  
Trade mark: CUBOT  
Manufacturer: Shenzhen Huafurui Technology Co., Ltd  
Address: Unit 1401 & 1402, 14/F, Jinqi Zhigu Mansion (No. 4 Building of Chongwen Garden), Crossing of the Liuxian Street and Tangling Road, Taoyuan Street, Nanshan District, Shenzhen, P.R. China

Sample Received Date: Sep. 15, 2022  
Testing Period: Sep. 15, 2022~Nov. 08, 2022

**Test Requirement:**

As specified by client, to determine the Lead(Pb), Cadmium(Cd), Mercury(Hg), Hexavalent Chromium (Cr(VI)), Polybrominated Biphenyls(PBBs), Polybrominated Diphenyl Ethers(PBDEs), Bis-(2-ethylhexyl) Phthalate (DEHP), Benzyl butyl Phthalate (BBP), Dibutyl Phthalate (DBP) and Diisobutyl Phthalate(DIBP) contents in the submitted sample in accordance with RoHS Directive (EU) 2015/863 amending Annex II to Directive 2011/65/EU.

**Test Result(s):** Please refer to the following page(s);

**Test Method:** Please refer to the following page(s);

Compiled by: \_\_\_\_\_

*Dora*

Reviewed by: \_\_\_\_\_

*Y. Sun*

Approved by: \_\_\_\_\_

*Mark Liao*

Date: \_\_\_\_\_

2022-11-11

**Test Result(s):**
**Lead(Pb), Cadmium(Cd), Mercury(Hg), Hexavalent Chromium (Cr(VI)), Polybrominated Biphenyls (PBBs), Polybrominated Diphenyl Ethers(PBDEs)**

## 1. Smartphone - Shell

Part No.	Part Description	Test Items	XRF Screening Result(mg/kg)	Chemical Test Result(mg/kg)	Conclusion
1	Black coating of glass	Pb	BL	/	Pass
		Cd	BL	/	
		Hg	BL	/	
		Cr(Cr(VI))	BL	/	
		Br(PBBs&PBDEs)	BL	/	
2	Glass	Pb	BL	/	Pass
		Cd	BL	/	
		Hg	BL	/	
		Cr(Cr(VI))	BL	/	
		Br(PBBs&PBDEs)	BL	/	
3	Transparent plastic sheet	Pb	BL	/	Pass
		Cd	BL	/	
		Hg	BL	/	
		Cr(Cr(VI))	BL	/	
		Br(PBBs&PBDEs)	BL	/	
4	Transparent coating of rear cover	Pb	BL	/	Pass
		Cd	BL	/	
		Hg	BL	/	
		Cr(Cr(VI))	BL	/	
		Br(PBBs&PBDEs)	BL	/	
5	Plastic base material of rear cover	Pb	BL	/	Pass
		Cd	BL	/	
		Hg	BL	/	
		Cr(Cr(VI))	BL	/	
		Br(PBBs&PBDEs)	BL	/	
6	Black plastic rear shell	Pb	BL	/	Pass
		Cd	BL	/	
		Hg	BL	/	
		Cr(Cr(VI))	BL	/	
		Br(PBBs&PBDEs)	BL	/	
7	Black transparent plastic sheet of black plastic rear shell	Pb	BL	/	Pass
		Cd	BL	/	
		Hg	BL	/	
		Cr(Cr(VI))	BL	/	
		Br(PBBs&PBDEs)	BL	/	

8	Transparent plastic guide lamp block of black plastic rear shell	Pb	BL	/	Pass
		Cd	BL	/	
		Hg	BL	/	
		Cr(Cr(VI))	BL	/	
		Br(PBBs&PBDEs)	BL	/	
9	Black plastic frame	Pb	BL	/	Pass
		Cd	BL	/	
		Hg	BL	/	
		Cr(Cr(VI))	BL	/	
		Br(PBBs&PBDEs)	BL	/	
10	White label of black plastic frame	Pb	BL	/	Pass
		Cd	BL	/	
		Hg	BL	/	
		Cr(Cr(VI))	BL	/	
		Br(PBBs&PBDEs)	BL	/	
11	Black fabric net with double-sided tape of black plastic frame	Pb	BL	/	Pass
		Cd	BL	/	
		Hg	BL	/	
		Cr(Cr(VI))	BL	/	
		Br(PBBs&PBDEs)	BL	/	
12	Black plastic sheet with double-sided tape of black plastic frame	Pb	BL	/	Pass
		Cd	BL	/	
		Hg	BL	/	
		Cr(Cr(VI))	BL	/	
		Br(PBBs&PBDEs)	BL	/	
13	Black foam strip with double-sided tape of black plastic frame	Pb	BL	/	Pass
		Cd	BL	/	
		Hg	BL	/	
		Cr(Cr(VI))	BL	/	
		Br(PBBs&PBDEs)	BL	/	
14	Silvery grey tape with sponge	Pb	BL	/	Pass
		Cd	BL	/	
		Hg	BL	/	
		Cr(Cr(VI))	BL	/	
		Br(PBBs&PBDEs)	BL	/	
15	Silvery grey tape	Pb	BL	/	Pass
		Cd	BL	/	
		Hg	BL	/	
		Cr(Cr(VI))	BL	/	
		Br(PBBs&PBDEs)	BL	/	

16	Silver grey conductive fabric	Pb	BL	/	Pass
		Cd	BL	/	
		Hg	BL	/	
		Cr(Cr(VI))	BL	/	
		Br(PBBs&PBDEs)	BL	/	
17	Black plastic block	Pb	BL	/	Pass
		Cd	BL	/	
		Hg	BL	/	
		Cr(Cr(VI))	BL	/	
		Br(PBBs&PBDEs)	BL	/	
18	Black rubber sleeve	Pb	BL	/	Pass
		Cd	BL	/	
		Hg	BL	/	
		Cr(Cr(VI))	BL	/	
		Br(PBBs&PBDEs)	BL	/	
19	Silvery metal screw	Pb	BL	/	Pass
		Cd	BL	/	
		Hg	BL	/	
		Cr(Cr(VI))	BL	/	
		Br(PBBs&PBDEs)	/	/	
20	Black metal screw	Pb	BL	/	Pass
		Cd	BL	/	
		Hg	BL	/	
		Cr(Cr(VI))	IN	N.D.	
		Br(PBBs&PBDEs)	/	/	

## 2. Smartphone - Screen

21	Glass screen	Pb	BL	/	Pass
		Cd	BL	/	
		Hg	BL	/	
		Cr(Cr(VI))	BL	/	
		Br(PBBs&PBDEs)	BL	/	
22	Black colloid	Pb	BL	/	Pass
		Cd	BL	/	
		Hg	BL	/	
		Cr(Cr(VI))	BL	/	
		Br(PBBs&PBDEs)	BL	/	
23	Reflective translucent plastic sheet	Pb	BL	/	Pass
		Cd	BL	/	
		Hg	BL	/	
		Cr(Cr(VI))	BL	/	
		Br(PBBs&PBDEs)	BL	/	

24	Transparent plastic sheet	Pb	BL	/	Pass
		Cd	BL	/	
		Hg	BL	/	
		Cr(Cr(VI))	BL	/	
		Br(PBBs&PBDEs)	BL	/	
25	Frosted white plastic	Pb	BL	/	Pass
		Cd	BL	/	
		Hg	BL	/	
		Cr(Cr(VI))	BL	/	
		Br(PBBs&PBDEs)	BL	/	
26	Reflective plastic sheet	Pb	BL	/	Pass
		Cd	BL	/	
		Hg	BL	/	
		Cr(Cr(VI))	BL	/	
		Br(PBBs&PBDEs)	BL	/	
27	Transparent plastic plate	Pb	BL	/	Pass
		Cd	BL	/	
		Hg	BL	/	
		Cr(Cr(VI))	BL	/	
		Br(PBBs&PBDEs)	BL	/	
28	White plastic frame	Pb	BL	/	Pass
		Cd	BL	/	
		Hg	BL	/	
		Cr(Cr(VI))	BL	/	
		Br(PBBs&PBDEs)	BL	/	
29	Black foam strip	Pb	BL	/	Pass
		Cd	BL	/	
		Hg	BL	/	
		Cr(Cr(VI))	BL	/	
		Br(PBBs&PBDEs)	BL	/	
30	Black tape	Pb	BL	/	Pass
		Cd	BL	/	
		Hg	BL	/	
		Cr(Cr(VI))	BL	/	
		Br(PBBs&PBDEs)	BL	/	
31	Yellow FPC	Pb	BL	/	Pass
		Cd	BL	/	
		Hg	BL	/	
		Cr(Cr(VI))	BL	/	
		Br(PBBs&PBDEs)	BL	/	

32	Silvery metal sheet of yellow FPC	Pb	BL	/	Pass
		Cd	BL	/	
		Hg	BL	/	
		Cr(Cr(VI))	IN	N.D.	
		Br(PBBs&PBDEs)	/	/	
33	SMD chip of yellow FPC	Pb	BL	/	Pass
		Cd	BL	/	
		Hg	BL	/	
		Cr(Cr(VI))	BL	/	
		Br(PBBs&PBDEs)	BL	/	
34	SMD LED of yellow FPC	Pb	BL	/	Pass
		Cd	BL	/	
		Hg	BL	/	
		Cr(Cr(VI))	BL	/	
		Br(PBBs&PBDEs)	BL	/	

### 3. Smartphone - Speaker

35	Black foam pads with tape	Pb	BL	/	Pass
		Cd	BL	/	
		Hg	BL	/	
		Cr(Cr(VI))	BL	/	
		Br(PBBs&PBDEs)	BL	/	
36	Silvery metal sheet	Pb	BL	/	Pass
		Cd	BL	/	
		Hg	BL	/	
		Cr(Cr(VI))	BL	/	
		Br(PBBs&PBDEs)	/	/	
37	Silvery metal base	Pb	BL	/	Pass
		Cd	BL	/	
		Hg	BL	/	
		Cr(Cr(VI))	BL	/	
		Br(PBBs&PBDEs)	/	/	
38	Magnet	Pb	BL	/	Pass
		Cd	BL	/	
		Hg	BL	/	
		Cr(Cr(VI))	BL	/	
		Br(PBBs&PBDEs)	/	/	
39	Silvery paper sheet with transparent film	Pb	BL	/	Pass
		Cd	BL	/	
		Hg	BL	/	
		Cr(Cr(VI))	BL	/	
		Br(PBBs&PBDEs)	BL	/	

40	Cupreous metal coil	Pb	BL	/	Pass
		Cd	BL	/	
		Hg	BL	/	
		Cr(Cr(VI))	BL	/	
		Br(PBBs&PBDEs)	/	/	
41	Black plastic frame	Pb	BL	/	Pass
		Cd	BL	/	
		Hg	BL	/	
		Cr(Cr(VI))	BL	/	
		Br(PBBs&PBDEs)	BL	/	
42	Silvery metal contact pin	Pb	BL	/	Pass
		Cd	BL	/	
		Hg	BL	/	
		Cr(Cr(VI))	IN	N.D.	
		Br(PBBs&PBDEs)	/	/	
43	Silvery metal strip	Pb	BL	/	Pass
		Cd	BL	/	
		Hg	BL	/	
		Cr(Cr(VI))	IN	N.D.	
		Br(PBBs&PBDEs)	/	/	
44	Black FPC 1	Pb	BL	/	Pass
		Cd	BL	/	
		Hg	BL	/	
		Cr(Cr(VI))	BL	/	
		Br(PBBs&PBDEs)	BL	/	
45	Silvery metal shrapnel	Pb	BL	/	Pass
		Cd	BL	/	
		Hg	BL	/	
		Cr(Cr(VI))	IN	N.D.	
		Br(PBBs&PBDEs)	/	/	
46	Black tape	Pb	BL	/	Pass
		Cd	BL	/	
		Hg	BL	/	
		Cr(Cr(VI))	BL	/	
		Br(PBBs&PBDEs)	BL	/	
47	Black FPC 2	Pb	BL	/	Pass
		Cd	BL	/	
		Hg	BL	/	
		Cr(Cr(VI))	BL	/	
		Br(PBBs&PBDEs)	BL	/	

48	Silvery metal sheet of black FPC 2	Pb	BL	/	Pass
		Cd	BL	/	
		Hg	BL	/	
		Cr(Cr(VI))	IN	N.D.	
		Br(PBBs&PBDEs)	/	/	
49	Black plastic of black interface of black FPC 2	Pb	BL	/	Pass
		Cd	BL	/	
		Hg	BL	/	
		Cr(Cr(VI))	BL	/	
		Br(PBBs&PBDEs)	BL	/	
50	Metal plug pin of black interface of black FPC 2	Pb	BL	/	Pass
		Cd	BL	/	
		Hg	BL	/	
		Cr(Cr(VI))	BL	/	
		Br(PBBs&PBDEs)	/	/	
51	Black FPC 3	Pb	BL	/	Pass
		Cd	BL	/	
		Hg	BL	/	
		Cr(Cr(VI))	BL	/	
		Br(PBBs&PBDEs)	BL	/	

## 4. Smartphone -FPC

52	Green PCB	Pb	BL	/	Pass
		Cd	BL	/	
		Hg	BL	/	
		Cr(Cr(VI))	BL	/	
		Br(PBBs&PBDEs)	IN	N.D.	
53	Microphone body	Pb	BL	/	Pass
		Cd	BL	/	
		Hg	BL	/	
		Cr(Cr(VI))	IN	N.D.	
		Br(PBBs&PBDEs)	BL	/	
54	Silvery metal contact pin	Pb	BL	/	Pass
		Cd	BL	/	
		Hg	BL	/	
		Cr(Cr(VI))	IN	N.D.	
		Br(PBBs&PBDEs)	/	/	
55	Black plastic of black interface	Pb	BL	/	Pass
		Cd	BL	/	
		Hg	BL	/	
		Cr(Cr(VI))	BL	/	
		Br(PBBs&PBDEs)	BL	/	



56	Metal plug pin of black interface	Pb	BL	/	Pass
		Cd	BL	/	
		Hg	BL	/	
		Cr(Cr(VI))	BL	/	
		Br(PBBs&PBDEs)	/	/	
57	Golden metal contact pin	Pb	BL	/	Pass
		Cd	BL	/	
		Hg	BL	/	
		Cr(Cr(VI))	BL	/	
		Br(PBBs&PBDEs)	/	/	
58	SMD chip	Pb	BL	/	Pass
		Cd	BL	/	
		Hg	BL	/	
		Cr(Cr(VI))	BL	/	
		Br(PBBs&PBDEs)	BL	/	

## 5. Smartphone -PCBA 1

59	Green PCB	Pb	BL	/	Pass
		Cd	BL	/	
		Hg	BL	/	
		Cr(Cr(VI))	BL	/	
		Br(PBBs&PBDEs)	IN	N.D.	
60	Silvery metal shell of camera	Pb	BL	/	Pass
		Cd	BL	/	
		Hg	BL	/	
		Cr(Cr(VI))	BL	/	
		Br(PBBs&PBDEs)	/	/	
61	Lens of camera	Pb	BL	/	Pass
		Cd	BL	/	
		Hg	BL	/	
		Cr(Cr(VI))	BL	/	
		Br(PBBs&PBDEs)	BL	/	
62	Glass of camera	Pb	BL	/	Pass
		Cd	BL	/	
		Hg	BL	/	
		Cr(Cr(VI))	BL	/	
		Br(PBBs&PBDEs)	BL	/	
63	Cupreous metal coil of camera	Pb	BL	/	Pass
		Cd	BL	/	
		Hg	BL	/	
		Cr(Cr(VI))	BL	/	
		Br(PBBs&PBDEs)	/	/	

64	Black plastic frame of camera	Pb	BL	/	Pass
		Cd	BL	/	
		Hg	BL	/	
		Cr(Cr(VI))	BL	/	
		Br(PBBs&PBDEs)	BL	/	
65	Photosensitive component of camera	Pb	BL	/	Pass
		Cd	BL	/	
		Hg	BL	/	
		Cr(Cr(VI))	BL	/	
		Br(PBBs&PBDEs)	BL	/	
66	Yellow FPC of camera	Pb	BL	/	Pass
		Cd	BL	/	
		Hg	BL	/	
		Cr(Cr(VI))	BL	/	
		Br(PBBs&PBDEs)	BL	/	
67	Brown plastic sheet of camera	Pb	BL	/	Pass
		Cd	BL	/	
		Hg	BL	/	
		Cr(Cr(VI))	BL	/	
		Br(PBBs&PBDEs)	BL	/	
68	Silvery metal sheet of camera	Pb	BL	/	Pass
		Cd	BL	/	
		Hg	BL	/	
		Cr(Cr(VI))	IN	N.D.	
		Br(PBBs&PBDEs)	/	/	
69	Black plastic of black/grey interface	Pb	BL	/	Pass
		Cd	BL	/	
		Hg	BL	/	
		Cr(Cr(VI))	BL	/	
		Br(PBBs&PBDEs)	BL	/	
70	Grey plastic of black/grey interface	Pb	BL	/	Pass
		Cd	BL	/	
		Hg	BL	/	
		Cr(Cr(VI))	BL	/	
		Br(PBBs&PBDEs)	BL	/	
71	Metal plug pin of black/grey interface	Pb	BL	/	Pass
		Cd	BL	/	
		Hg	BL	/	
		Cr(Cr(VI))	BL	/	
		Br(PBBs&PBDEs)	/	/	

72	Black foam with double-sided tape of vibration motor	Pb	BL	/	Pass
		Cd	BL	/	
		Hg	BL	/	
		Cr(Cr(VI))	BL	/	
		Br(PBBs&PBDEs)	BL	/	
73	Silvery metal shell of vibration motor	Pb	BL	/	Pass
		Cd	BL	/	
		Hg	BL	/	
		Cr(Cr(VI))	BL	/	
		Br(PBBs&PBDEs)	/	/	
74	Magnet of vibration motor	Pb	BL	/	Pass
		Cd	BL	/	
		Hg	BL	/	
		Cr(Cr(VI))	BL	/	
		Br(PBBs&PBDEs)	/	/	
75	White plastic of vibration motor	Pb	BL	/	Pass
		Cd	BL	/	
		Hg	BL	/	
		Cr(Cr(VI))	BL	/	
		Br(PBBs&PBDEs)	BL	/	
76	Cupreous metal coil of vibration motor	Pb	BL	/	Pass
		Cd	BL	/	
		Hg	BL	/	
		Cr(Cr(VI))	BL	/	
		Br(PBBs&PBDEs)	/	/	
77	Cupreous metal ring of vibration motor	Pb	BL	/	Pass
		Cd	BL	/	
		Hg	BL	/	
		Cr(Cr(VI))	BL	/	
		Br(PBBs&PBDEs)	/	/	
78	Silvery metal block of vibration motor	Pb	BL	/	Pass
		Cd	BL	/	
		Hg	BL	/	
		Cr(Cr(VI))	BL	/	
		Br(PBBs&PBDEs)	/	/	
79	Green PCB of vibration motor	Pb	BL	/	Pass
		Cd	BL	/	
		Hg	BL	/	
		Cr(Cr(VI))	BL	/	
		Br(PBBs&PBDEs)	BL	/	

80	Yellow FPC of vibration motor	Pb	BL	/	Pass
		Cd	BL	/	
		Hg	BL	/	
		Cr(Cr(VI))	BL	/	
		Br(PBBs&PBDEs)	BL	/	
81	Transparent colloid of vibration motor	Pb	BL	/	Pass
		Cd	BL	/	
		Hg	BL	/	
		Cr(Cr(VI))	BL	/	
		Br(PBBs&PBDEs)	BL	/	
82	Blue wire jacket of vibration motor	Pb	BL	/	Pass
		Cd	BL	/	
		Hg	BL	/	
		Cr(Cr(VI))	BL	/	
		Br(PBBs&PBDEs)	BL	/	
83	Red wire jacket of vibration motor	Pb	BL	/	Pass
		Cd	BL	/	
		Hg	BL	/	
		Cr(Cr(VI))	BL	/	
		Br(PBBs&PBDEs)	BL	/	
84	Core of wire of vibration motor	Pb	BL	/	Pass
		Cd	BL	/	
		Hg	BL	/	
		Cr(Cr(VI))	BL	/	
		Br(PBBs&PBDEs)	/	/	
85	Silvery metal shell of Micro interface	Pb	BL	/	Pass
		Cd	BL	/	
		Hg	BL	/	
		Cr(Cr(VI))	IN	N.D.	
		Br(PBBs&PBDEs)	/	/	
86	Black plastic of Micro interface	Pb	BL	/	Pass
		Cd	BL	/	
		Hg	BL	/	
		Cr(Cr(VI))	BL	/	
		Br(PBBs&PBDEs)	BL	/	
87	Metal plug pin of Micro interface	Pb	BL	/	Pass
		Cd	BL	/	
		Hg	BL	/	
		Cr(Cr(VI))	BL	/	
		Br(PBBs&PBDEs)	/	/	

88	Black plastic of audio interface	Pb	BL	/	Pass
		Cd	BL	/	
		Hg	BL	/	
		Cr(Cr(VI))	BL	/	
		Br(PBBs&PBDEs)	BL	/	
89	Metal plug pin of audio interface	Pb	BL	/	Pass
		Cd	BL	/	
		Hg	BL	/	
		Cr(Cr(VI))	BL	/	
		Br(PBBs&PBDEs)	/	/	
90	Silvery metal head of grey interface	Pb	BL	/	Pass
		Cd	BL	/	
		Hg	BL	/	
		Cr(Cr(VI))	BL	/	
		Br(PBBs&PBDEs)	/	/	
91	Grey plastic of grey interface	Pb	BL	/	Pass
		Cd	BL	/	
		Hg	BL	/	
		Cr(Cr(VI))	BL	/	
		Br(PBBs&PBDEs)	BL	/	
92	Metal plug pin of grey interface	Pb	BL	/	Pass
		Cd	BL	/	
		Hg	BL	/	
		Cr(Cr(VI))	BL	/	
		Br(PBBs&PBDEs)	/	/	
93	Silvery metal shell of battery interface	Pb	BL	/	Pass
		Cd	BL	/	
		Hg	BL	/	
		Cr(Cr(VI))	IN	N.D.	
		Br(PBBs&PBDEs)	/	/	
94	Grey plastic of battery interface	Pb	BL	/	Pass
		Cd	BL	/	
		Hg	BL	/	
		Cr(Cr(VI))	BL	/	
		Br(PBBs&PBDEs)	BL	/	
95	Metal contact pin of battery interface	Pb	BL	/	Pass
		Cd	BL	/	
		Hg	BL	/	
		Cr(Cr(VI))	BL	/	
		Br(PBBs&PBDEs)	/	/	

96	Silvery metal spring of battery interface	Pb	BL	/	Pass
		Cd	BL	/	
		Hg	BL	/	
		Cr(Cr(VI))	BL	/	
		Br(PBBs&PBDEs)	/	/	
97	Silvery metal shell of card slot	Pb	BL	/	Pass
		Cd	BL	/	
		Hg	BL	/	
		Cr(Cr(VI))	IN	N.D.	
		Br(PBBs&PBDEs)	/	/	
98	Grey plastic of card slot	Pb	BL	/	Pass
		Cd	BL	/	
		Hg	BL	/	
		Cr(Cr(VI))	BL	/	
		Br(PBBs&PBDEs)	BL	/	
99	Metal plug pin of card slot	Pb	BL	/	Pass
		Cd	BL	/	
		Hg	BL	/	
		Cr(Cr(VI))	BL	/	
		Br(PBBs&PBDEs)	/	/	
100	Metal contact pin of card slot	Pb	BL	/	Pass
		Cd	BL	/	
		Hg	BL	/	
		Cr(Cr(VI))	BL	/	
		Br(PBBs&PBDEs)	/	/	
101	SMD chip 1	Pb	BL	/	Pass
		Cd	BL	/	
		Hg	BL	/	
		Cr(Cr(VI))	BL	/	
		Br(PBBs&PBDEs)	BL	/	
102	SMD chip 2	Pb	BL	/	Pass
		Cd	BL	/	
		Hg	BL	/	
		Cr(Cr(VI))	BL	/	
		Br(PBBs&PBDEs)	BL	/	
103	SMD chip 3	Pb	BL	/	Pass
		Cd	BL	/	
		Hg	BL	/	
		Cr(Cr(VI))	BL	/	
		Br(PBBs&PBDEs)	BL	/	

104	SMD chip 4	Pb	BL	/	Pass
		Cd	BL	/	
		Hg	BL	/	
		Cr(Cr(VI))	BL	/	
		Br(PBBs&PBDEs)	BL	/	
105	Black electronic components	Pb	BL	/	Pass
		Cd	BL	/	
		Hg	BL	/	
		Cr(Cr(VI))	BL	/	
		Br(PBBs&PBDEs)	BL	/	
106	Blue electronic components	Pb	BL	/	Pass
		Cd	BL	/	
		Hg	BL	/	
		Cr(Cr(VI))	BL	/	
		Br(PBBs&PBDEs)	BL	/	
107	crystal oscillator	Pb	BL	/	Pass
		Cd	BL	/	
		Hg	BL	/	
		Cr(Cr(VI))	BL	/	
		Br(PBBs&PBDEs)	BL	/	
108	SMD resistor	Pb	BL	/	Pass
		Cd	BL	/	
		Hg	BL	/	
		Cr(Cr(VI))	BL	/	
		Br(PBBs&PBDEs)	BL	/	
109	SMD LED	Pb	BL	/	Pass
		Cd	BL	/	
		Hg	BL	/	
		Cr(Cr(VI))	BL	/	
		Br(PBBs&PBDEs)	BL	/	
110	SMD inductor	Pb	BL	/	Pass
		Cd	BL	/	
		Hg	BL	/	
		Cr(Cr(VI))	BL	/	
		Br(PBBs&PBDEs)	/	/	
111	Black foam pads of speakers	Pb	BL	/	Pass
		Cd	BL	/	
		Hg	BL	/	
		Cr(Cr(VI))	BL	/	
		Br(PBBs&PBDEs)	BL	/	

112	Silvery metal frame of speakers	Pb	BL	/	Pass
		Cd	BL	/	
		Hg	BL	/	
		Cr(Cr(VI))	BL	/	
		Br(PBBs&PBDEs)	/	/	
113	Silvery metal base of speakers	Pb	BL	/	Pass
		Cd	BL	/	
		Hg	BL	/	
		Cr(Cr(VI))	BL	/	
		Br(PBBs&PBDEs)	/	/	
114	Magnet of speakers	Pb	BL	/	Pass
		Cd	BL	/	
		Hg	BL	/	
		Cr(Cr(VI))	BL	/	
		Br(PBBs&PBDEs)	/	/	
115	Silvery paper with transparent film of speakers	Pb	BL	/	Pass
		Cd	BL	/	
		Hg	BL	/	
		Cr(Cr(VI))	BL	/	
		Br(PBBs&PBDEs)	BL	/	
116	Cupreous metal coil of speakers	Pb	BL	/	Pass
		Cd	BL	/	
		Hg	BL	/	
		Cr(Cr(VI))	BL	/	
		Br(PBBs&PBDEs)	/	/	
117	Black plastic frame of speakers	Pb	BL	/	Pass
		Cd	BL	/	
		Hg	BL	/	
		Cr(Cr(VI))	BL	/	
		Br(PBBs&PBDEs)	BL	/	
118	Silvery metal contact pin of speakers	Pb	BL	/	Pass
		Cd	BL	/	
		Hg	BL	/	
		Cr(Cr(VI))	IN	N.D.	
		Br(PBBs&PBDEs)	/	/	
119	Black colloid of speakers	Pb	BL	/	Pass
		Cd	BL	/	
		Hg	BL	/	
		Cr(Cr(VI))	BL	/	
		Br(PBBs&PBDEs)	BL	/	



120	Black wire jacket of speakers	Pb	BL	/	Pass
		Cd	BL	/	
		Hg	BL	/	
		Cr(Cr(VI))	BL	/	
		Br(PBBs&PBDEs)	BL	/	
121	Red wire jacket of speakers	Pb	BL	/	Pass
		Cd	BL	/	
		Hg	BL	/	
		Cr(Cr(VI))	BL	/	
		Br(PBBs&PBDEs)	BL	/	
122	Core of wire of speakers	Pb	BL	/	Pass
		Cd	BL	/	
		Hg	BL	/	
		Cr(Cr(VI))	BL	/	
		Br(PBBs&PBDEs)	/	/	
123	Silvery metal cover	Pb	BL	/	Pass
		Cd	BL	/	
		Hg	BL	/	
		Cr(Cr(VI))	BL	/	
		Br(PBBs&PBDEs)	/	/	
124	White QR code label	Pb	BL	/	Pass
		Cd	BL	/	
		Hg	BL	/	
		Cr(Cr(VI))	BL	/	
		Br(PBBs&PBDEs)	BL	/	
125	Black wire jacket	Pb	BL	/	Pass
		Cd	BL	/	
		Hg	BL	/	
		Cr(Cr(VI))	BL	/	
		Br(PBBs&PBDEs)	BL	/	
126	Core of wire	Pb	BL	/	Pass
		Cd	BL	/	
		Hg	BL	/	
		Cr(Cr(VI))	BL	/	
		Br(PBBs&PBDEs)	/	/	
127	Silvery metal head	Pb	BL	/	Pass
		Cd	BL	/	
		Hg	BL	/	
		Cr(Cr(VI))	BL	/	
		Br(PBBs&PBDEs)	/	/	

## 7. Smartphone - Battery

128	Black plastic jacket	Pb	BL	/	Pass
		Cd	BL	/	
		Hg	BL	/	
		Cr(Cr(VI))	BL	/	
		Br(PBBs&PBDEs)	BL	/	
129	Black plastic cover	Pb	BL	/	Pass
		Cd	BL	/	
		Hg	BL	/	
		Cr(Cr(VI))	BL	/	
		Br(PBBs&PBDEs)	BL	/	
130	Black plastic sheet	Pb	BL	/	Pass
		Cd	BL	/	
		Hg	BL	/	
		Cr(Cr(VI))	BL	/	
		Br(PBBs&PBDEs)	BL	/	
131	Transparent double-sided adhesive of black plastic sheet	Pb	BL	/	Pass
		Cd	BL	/	
		Hg	BL	/	
		Cr(Cr(VI))	BL	/	
		Br(PBBs&PBDEs)	BL	/	
132	Yellow paper	Pb	BL	/	Pass
		Cd	BL	/	
		Hg	BL	/	
		Cr(Cr(VI))	BL	/	
		Br(PBBs&PBDEs)	BL	/	

## 8. Smartphone - Battery PCB

133	Black PCB	Pb	BL	/	Pass
		Cd	BL	/	
		Hg	BL	/	
		Cr(Cr(VI))	BL	/	
		Br(PBBs&PBDEs)	IN	N.D.	
134	Golden metal block	Pb	BL	/	Pass
		Cd	BL	/	
		Hg	BL	/	
		Cr(Cr(VI))	BL	/	
		Br(PBBs&PBDEs)	/	/	

135	Silvery metal block	Pb	BL	/	Pass
		Cd	BL	/	
		Hg	BL	/	
		Cr(Cr(VI))	BL	/	
		Br(PBBs&PBDEs)	/	/	
136	SMD chip 1	Pb	BL	/	Pass
		Cd	BL	/	
		Hg	BL	/	
		Cr(Cr(VI))	BL	/	
		Br(PBBs&PBDEs)	BL	/	
137	SMD chip 2	Pb	BL	/	Pass
		Cd	BL	/	
		Hg	BL	/	
		Cr(Cr(VI))	BL	/	
		Br(PBBs&PBDEs)	BL	/	
138	Black plastic strip	Pb	BL	/	Pass
		Cd	BL	/	
		Hg	BL	/	
		Cr(Cr(VI))	BL	/	
		Br(PBBs&PBDEs)	BL	/	
139	Green paper	Pb	BL	/	Pass
		Cd	BL	/	
		Hg	BL	/	
		Cr(Cr(VI))	BL	/	
		Br(PBBs&PBDEs)	BL	/	

## 9. Main test - Adaptor - Shell

140	White plastic shell	Pb	BL	/	Pass
		Cd	BL	/	
		Hg	BL	/	
		Cr(Cr(VI))	BL	/	
		Br(PBBs&PBDEs)	BL	/	
141	Silvery metal rod	Pb	BL	/	Pass
		Cd	BL	/	
		Hg	BL	/	
		Cr(Cr(VI))	BL	/	
		Br(PBBs&PBDEs)	/	/	

## 10. Main test - Adaptor -PCBA

142	Beige PCB	Pb	BL	/	Pass
		Cd	BL	/	
		Hg	BL	/	
		Cr(Cr(VI))	BL	/	
		Br(PBBs&PBDEs)	IN	N.D.	
143	Silvery metal shell of 2.0 USB interface	Pb	BL	/	Pass
		Cd	BL	/	
		Hg	BL	/	
		Cr(Cr(VI))	BL	/	
		Br(PBBs&PBDEs)	/	/	
144	Black plastic of 2.0 USB interface	Pb	BL	/	Pass
		Cd	BL	/	
		Hg	BL	/	
		Cr(Cr(VI))	BL	/	
		Br(PBBs&PBDEs)	IN	N.D.	
145	Metal plug pin of 2.0 USB interface	Pb	BL	/	Pass
		Cd	BL	/	
		Hg	BL	/	
		Cr(Cr(VI))	BL	/	
		Br(PBBs&PBDEs)	/	/	
146	Silvery metal sheet	Pb	BL	/	Pass
		Cd	BL	/	
		Hg	BL	/	
		Cr(Cr(VI))	BL	/	
		Br(PBBs&PBDEs)	/	/	
147	Grey body of RF1 color ring resistance	Pb	BL	/	Pass
		Cd	BL	/	
		Hg	BL	/	
		Cr(Cr(VI))	IN	N.D.	
		Br(PBBs&PBDEs)	BL	/	
148	Metal pin of RF1 color ring resistance	Pb	BL	/	Pass
		Cd	BL	/	
		Hg	BL	/	
		Cr(Cr(VI))	BL	/	
		Br(PBBs&PBDEs)	/	/	
149	Black casing tube of RF1 color ring resistance	Pb	BL	/	Pass
		Cd	BL	/	
		Hg	BL	/	
		Cr(Cr(VI))	BL	/	
		Br(PBBs&PBDEs)	BL	/	

150	Dark green tape of T1 transformer	Pb	BL	/	Pass
		Cd	BL	/	
		Hg	BL	/	
		Cr(Cr(VI))	BL	/	
		Br(PBBs&PBDEs)	BL	/	
151	White label of T1 transformer	Pb	BL	/	Pass
		Cd	BL	/	
		Hg	BL	/	
		Cr(Cr(VI))	BL	/	
		Br(PBBs&PBDEs)	BL	/	
152	Yellow tape of T1 transformer	Pb	BL	/	Pass
		Cd	BL	/	
		Hg	BL	/	
		Cr(Cr(VI))	BL	/	
		Br(PBBs&PBDEs)	IN	N.D.	
153	Magnet core of T1 transformer	Pb	BL	/	Pass
		Cd	BL	/	
		Hg	BL	/	
		Cr(Cr(VI))	BL	/	
		Br(PBBs&PBDEs)	/	/	
154	Cupreous metal coil of T1 transformer	Pb	BL	/	Pass
		Cd	BL	/	
		Hg	BL	/	
		Cr(Cr(VI))	BL	/	
		Br(PBBs&PBDEs)	/	/	
155	Black plastic frame of T1 transformer	Pb	BL	/	Pass
		Cd	BL	/	
		Hg	BL	/	
		Cr(Cr(VI))	BL	/	
		Br(PBBs&PBDEs)	BL	/	
156	Metal pin of T1 transformer	Pb	BL	/	Pass
		Cd	BL	/	
		Hg	BL	/	
		Cr(Cr(VI))	BL	/	
		Br(PBBs&PBDEs)	/	/	
157	Black plastic jacket of C2 electrolytic capacitors	Pb	BL	/	Pass
		Cd	BL	/	
		Hg	BL	/	
		Cr(Cr(VI))	BL	/	
		Br(PBBs&PBDEs)	BL	/	

158	Aluminum shell of C2 electrolytic capacitors	Pb	BL	/	Pass
		Cd	BL	/	
		Hg	BL	/	
		Cr(Cr(VI))	BL	/	
		Br(PBBs&PBDEs)	/	/	
159	Anode foil of C2 electrolytic capacitors	Pb	BL	/	Pass
		Cd	BL	/	
		Hg	BL	/	
		Cr(Cr(VI))	BL	/	
		Br(PBBs&PBDEs)	/	/	
160	Cathode foil of C2 electrolytic capacitors	Pb	BL	/	Pass
		Cd	BL	/	
		Hg	BL	/	
		Cr(Cr(VI))	BL	/	
		Br(PBBs&PBDEs)	/	/	
161	Electrolytic paper of C2 electrolytic capacitors	Pb	BL	/	Pass
		Cd	BL	/	
		Hg	BL	/	
		Cr(Cr(VI))	BL	/	
		Br(PBBs&PBDEs)	BL	/	
162	Rubber blanket of C2 electrolytic capacitors	Pb	BL	/	Pass
		Cd	BL	/	
		Hg	BL	/	
		Cr(Cr(VI))	BL	/	
		Br(PBBs&PBDEs)	BL	/	
163	Electrode pin of C2 electrolytic capacitors	Pb	BL	/	Pass
		Cd	BL	/	
		Hg	BL	/	
		Cr(Cr(VI))	BL	/	
		Br(PBBs&PBDEs)	/	/	
164	Green body of L1 color ring resistance	Pb	BL	/	Pass
		Cd	BL	/	
		Hg	BL	/	
		Cr(Cr(VI))	BL	/	
		Br(PBBs&PBDEs)	BL	/	
165	Metal pin of L1 color ring resistance	Pb	BL	/	Pass
		Cd	BL	/	
		Hg	BL	/	
		Cr(Cr(VI))	BL	/	
		Br(PBBs&PBDEs)	/	/	

166	SMD chip 1	Pb	BL	/	Pass
		Cd	BL	/	
		Hg	BL	/	
		Cr(Cr(VI))	BL	/	
		Br(PBBs&PBDEs)	BL	/	
167	SMD diode	Pb	3330 <sup>#3</sup>	/	Pass
		Cd	BL	/	
		Hg	BL	/	
		Cr(Cr(VI))	BL	/	
		Br(PBBs&PBDEs)	BL	/	
168	SMD resistor	Pb	BL	/	Pass
		Cd	BL	/	
		Hg	BL	/	
		Cr(Cr(VI))	BL	/	
		Br(PBBs&PBDEs)	BL	/	
169	SMD chip 2	Pb	BL	/	Pass
		Cd	BL	/	
		Hg	BL	/	
		Cr(Cr(VI))	BL	/	
		Br(PBBs&PBDEs)	BL	/	
170	Tin solder	Pb	BL	/	Pass
		Cd	BL	/	
		Hg	BL	/	
		Cr(Cr(VI))	BL	/	
		Br(PBBs&PBDEs)	/	/	

## 11. Data cable

171	White encapsulation of 2.0 USB interface	Pb	BL	/	Pass
		Cd	BL	/	
		Hg	BL	/	
		Cr(Cr(VI))	BL	/	
		Br(PBBs&PBDEs)	BL	/	
172	Translucent plastic of 2.0 USB interface	Pb	BL	/	Pass
		Cd	BL	/	
		Hg	BL	/	
		Cr(Cr(VI))	BL	/	
		Br(PBBs&PBDEs)	BL	/	
173	Silvery metal shell of 2.0 USB interface	Pb	BL	/	Pass
		Cd	BL	/	
		Hg	BL	/	
		Cr(Cr(VI))	BL	/	
		Br(PBBs&PBDEs)	/	/	

174	White plastic of 2.0 USB interface	Pb	BL	/	Pass
		Cd	BL	/	
		Hg	BL	/	
		Cr(Cr(VI))	BL	/	
		Br(PBBs&PBDEs)	IN	N.D.	
175	Metal plug pin of 2.0 USB interface	Pb	BL	/	Pass
		Cd	BL	/	
		Hg	BL	/	
		Cr(Cr(VI))	BL	/	
		Br(PBBs&PBDEs)	/	/	
176	Tin solder of 2.0 USB interface	Pb	BL	/	Pass
		Cd	BL	/	
		Hg	BL	/	
		Cr(Cr(VI))	BL	/	
		Br(PBBs&PBDEs)	/	/	
177	Yellow QR code label of 2.0 USB interface	Pb	BL	/	Pass
		Cd	BL	/	
		Hg	BL	/	
		Cr(Cr(VI))	BL	/	
		Br(PBBs&PBDEs)	BL	/	
178	White encapsulation of Micro interface	Pb	BL	/	Pass
		Cd	BL	/	
		Hg	BL	/	
		Cr(Cr(VI))	BL	/	
		Br(PBBs&PBDEs)	BL	/	
179	Translucent plastic of Micro interface	Pb	BL	/	Pass
		Cd	BL	/	
		Hg	BL	/	
		Cr(Cr(VI))	BL	/	
		Br(PBBs&PBDEs)	BL	/	
180	Silvery metal shell of Micro interface	Pb	BL	/	Pass
		Cd	BL	/	
		Hg	BL	/	
		Cr(Cr(VI))	IN	N.D.	
		Br(PBBs&PBDEs)	/	/	
181	Black plastic of Micro interface	Pb	BL	/	Pass
		Cd	BL	/	
		Hg	BL	/	
		Cr(Cr(VI))	BL	/	
		Br(PBBs&PBDEs)	BL	/	



182	Metal insert of Micro interface	Pb	BL	/	Pass
		Cd	BL	/	
		Hg	BL	/	
		Cr(Cr(VI))	IN	N.D.	
		Br(PBBs&PBDEs)	/	/	
183	Metal plug pin of Micro interface	Pb	BL	/	Pass
		Cd	BL	/	
		Hg	BL	/	
		Cr(Cr(VI))	BL	/	
		Br(PBBs&PBDEs)	/	/	
184	Tin solder of Micro interface	Pb	BL	/	Pass
		Cd	BL	/	
		Hg	BL	/	
		Cr(Cr(VI))	BL	/	
		Br(PBBs&PBDEs)	/	/	
185	White exterior wire jacket	Pb	BL	/	Pass
		Cd	BL	/	
		Hg	BL	/	
		Cr(Cr(VI))	BL	/	
		Br(PBBs&PBDEs)	BL	/	
186	Green inner wire jacket	Pb	BL	/	Pass
		Cd	BL	/	
		Hg	BL	/	
		Cr(Cr(VI))	BL	/	
		Br(PBBs&PBDEs)	BL	/	
187	White inner wire jacket	Pb	BL	/	Pass
		Cd	BL	/	
		Hg	BL	/	
		Cr(Cr(VI))	BL	/	
		Br(PBBs&PBDEs)	BL	/	
188	Pink inner wire jacket	Pb	BL	/	Pass
		Cd	BL	/	
		Hg	BL	/	
		Cr(Cr(VI))	BL	/	
		Br(PBBs&PBDEs)	BL	/	
189	Black inner wire jacket	Pb	BL	/	Pass
		Cd	BL	/	
		Hg	BL	/	
		Cr(Cr(VI))	BL	/	
		Br(PBBs&PBDEs)	BL	/	

190	Core of wire	Pb	BL	/	Pass
		Cd	BL	/	
		Hg	BL	/	
		Cr(Cr(VI))	BL	/	
		Br(PBBs&PBDEs)	/	/	

## 12. Difference - adapter - Shell

191	White plastic shell	Pb	BL	/	Pass
		Cd	BL	/	
		Hg	BL	/	
		Cr(Cr(VI))	BL	/	
		Br(PBBs&PBDEs)	BL	/	
192	Silvery metal plug pin	Pb	OL	18750 <sup>#1</sup>	Pass
		Cd	IN	N.D.	
		Hg	BL	/	
		Cr(Cr(VI))	BL	/	
		Br(PBBs&PBDEs)	/	/	
193	Silvery metal sheet	Pb	BL	/	Pass
		Cd	BL	/	
		Hg	BL	/	
		Cr(Cr(VI))	IN	N.D.	
		Br(PBBs&PBDEs)	/	/	

## 13. Difference - Adaptor -PCBA

194	Beige PCB	Pb	BL	/	Pass
		Cd	BL	/	
		Hg	BL	/	
		Cr(Cr(VI))	BL	/	
		Br(PBBs&PBDEs)	IN	N.D.	
195	Dark blue plastic leather of C6 electrolytic capacitors	Pb	BL	/	Pass
		Cd	BL	/	
		Hg	BL	/	
		Cr(Cr(VI))	BL	/	
		Br(PBBs&PBDEs)	BL	/	
196	Aluminum shell of C6 electrolytic capacitors	Pb	BL	/	Pass
		Cd	BL	/	
		Hg	BL	/	
		Cr(Cr(VI))	BL	/	
		Br(PBBs&PBDEs)	/	/	

197	Anode foil of C6 electrolytic capacitors	Pb	BL	/	Pass
		Cd	BL	/	
		Hg	BL	/	
		Cr(Cr(VI))	BL	/	
		Br(PBBs&PBDEs)	/	/	
198	Cathode foil of C6 electrolytic capacitors	Pb	BL	/	Pass
		Cd	BL	/	
		Hg	BL	/	
		Cr(Cr(VI))	BL	/	
		Br(PBBs&PBDEs)	/	/	
199	Electrolytic paper of C6 electrolytic capacitors	Pb	BL	/	Pass
		Cd	BL	/	
		Hg	BL	/	
		Cr(Cr(VI))	BL	/	
		Br(PBBs&PBDEs)	BL	/	
200	Rubber blanket of C6 electrolytic capacitors	Pb	BL	/	Pass
		Cd	BL	/	
		Hg	BL	/	
		Cr(Cr(VI))	BL	/	
		Br(PBBs&PBDEs)	BL	/	
201	Electrode pin of C6 electrolytic capacitors	Pb	BL	/	Pass
		Cd	BL	/	
		Hg	BL	/	
		Cr(Cr(VI))	BL	/	
		Br(PBBs&PBDEs)	/	/	
202	Black plastic of 2.0 USB interface	Pb	BL	/	Pass
		Cd	BL	/	
		Hg	BL	/	
		Cr(Cr(VI))	BL	/	
		Br(PBBs&PBDEs)	/	/	
203	Silvery metal shell of 2.0 USB interface	Pb	BL	/	Pass
		Cd	BL	/	
		Hg	BL	/	
		Cr(Cr(VI))	BL	/	
		Br(PBBs&PBDEs)	IN	N.D.	
204	Metal plug pin of 2.0 USB interface	Pb	BL	/	Pass
		Cd	BL	/	
		Hg	BL	/	
		Cr(Cr(VI))	BL	/	
		Br(PBBs&PBDEs)	/	/	

205	Green plastic jacket of C7 electrolytic capacitors	Pb	BL	/	Pass
		Cd	BL	/	
		Hg	BL	/	
		Cr(Cr(VI))	BL	/	
		Br(PBBs&PBDEs)	BL	/	
206	Aluminum shell of C7 electrolytic capacitors	Pb	BL	/	Pass
		Cd	BL	/	
		Hg	BL	/	
		Cr(Cr(VI))	BL	/	
		Br(PBBs&PBDEs)	/	/	
207	Anode foil of C7 electrolytic capacitors	Pb	BL	/	Pass
		Cd	BL	/	
		Hg	BL	/	
		Cr(Cr(VI))	BL	/	
		Br(PBBs&PBDEs)	/	/	
208	Cathode foil of C7 electrolytic capacitors	Pb	BL	/	Pass
		Cd	BL	/	
		Hg	BL	/	
		Cr(Cr(VI))	BL	/	
		Br(PBBs&PBDEs)	/	/	
209	Electrolytic paper of C7 electrolytic capacitors	Pb	BL	/	Pass
		Cd	BL	/	
		Hg	BL	/	
		Cr(Cr(VI))	BL	/	
		Br(PBBs&PBDEs)	BL	/	
210	Rubber blanket of C7 electrolytic capacitors	Pb	BL	/	Pass
		Cd	BL	/	
		Hg	BL	/	
		Cr(Cr(VI))	BL	/	
		Br(PBBs&PBDEs)	BL	/	
211	Electrode pin of C7 electrolytic capacitors	Pb	BL	/	Pass
		Cd	BL	/	
		Hg	BL	/	
		Cr(Cr(VI))	BL	/	
		Br(PBBs&PBDEs)	/	/	
212	Blue body of CY1 capacitor	Pb	BL	/	Pass
		Cd	BL	/	
		Hg	BL	/	
		Cr(Cr(VI))	BL	/	
		Br(PBBs&PBDEs)	BL	/	

213	Brown plastic jacket of C2 electrolytic capacitor	Pb	BL	/	Pass
		Cd	BL	/	
		Hg	BL	/	
		Cr(Cr(VI))	BL	/	
		Br(PBBs&PBDEs)	BL	/	
214	Black plastic sheet	Pb	BL	/	Pass
		Cd	BL	/	
		Hg	BL	/	
		Cr(Cr(VI))	BL	/	
		Br(PBBs&PBDEs)	IN	N.D.	
215	Transparent label of T1 transformer	Pb	BL	/	Pass
		Cd	BL	/	
		Hg	BL	/	
		Cr(Cr(VI))	BL	/	
		Br(PBBs&PBDEs)	BL	/	
216	Brown plastic jacket of C1 electrolytic capacitors	Pb	BL	/	Pass
		Cd	BL	/	
		Hg	BL	/	
		Cr(Cr(VI))	BL	/	
		Br(PBBs&PBDEs)	BL	/	
217	Aluminum shell of C1 electrolytic capacitors	Pb	BL	/	Pass
		Cd	BL	/	
		Hg	BL	/	
		Cr(Cr(VI))	BL	/	
		Br(PBBs&PBDEs)	/	/	
218	Anode foil of C1 electrolytic capacitors	Pb	BL	/	Pass
		Cd	BL	/	
		Hg	BL	/	
		Cr(Cr(VI))	BL	/	
		Br(PBBs&PBDEs)	/	/	
219	Cathode foil of C1 electrolytic capacitors	Pb	BL	/	Pass
		Cd	BL	/	
		Hg	BL	/	
		Cr(Cr(VI))	BL	/	
		Br(PBBs&PBDEs)	/	/	
220	Electrolytic paper of C1 electrolytic capacitors	Pb	BL	/	Pass
		Cd	BL	/	
		Hg	BL	/	
		Cr(Cr(VI))	BL	/	
		Br(PBBs&PBDEs)	BL	/	

221	Rubber blanket of C1 electrolytic capacitors	Pb	BL	/	Pass
		Cd	BL	/	
		Hg	BL	/	
		Cr(Cr(VI))	BL	/	
		Br(PBBs&PBDEs)	BL	/	
222	Electrode pin of C1 electrolytic capacitors	Pb	BL	/	Pass
		Cd	BL	/	
		Hg	BL	/	
		Cr(Cr(VI))	BL	/	
		Br(PBBs&PBDEs)	/	/	
223	SMD glass diode	Pb	14622 <sup>#2</sup>	/	Pass
		Cd	BL	/	
		Hg	BL	/	
		Cr(Cr(VI))	BL	/	
		Br(PBBs&PBDEs)	BL	/	
224	SMD diode	Pb	3185 <sup>#3</sup>	/	Pass
		Cd	BL	/	
		Hg	BL	/	
		Cr(Cr(VI))	BL	/	
		Br(PBBs&PBDEs)	BL	/	
225	Tin solder	Pb	BL	/	Pass
		Cd	BL	/	
		Hg	BL	/	
		Cr(Cr(VI))	BL	/	
		Br(PBBs&PBDEs)	/	/	

**Bis-(2-ethylhexyl) Phthalate (DEHP), Benzyl butyl Phthalate (BBP), Dibutyl Phthalate (DBP) and Diisobutyl Phthalate(DIBP)**

Test Items	Result(mg/kg)			
	1	2	3	4
Bis-(2-ethylhexyl) Phthalate (DEHP)	N.D.	N.D.	N.D.	N.D.
Benzyl butyl Phthalate (BBP)	N.D.	N.D.	N.D.	N.D.
Dibutyl Phthalate (DBP)	N.D.	N.D.	N.D.	N.D.
Diisobutyl Phthalate(DIBP)	N.D.	N.D.	N.D.	N.D.
Conclusion	Pass	Pass	Pass	Pass

Test Items	Result(mg/kg)			
	5	6	7	8
Bis-(2-ethylhexyl) Phthalate (DEHP)	N.D.	N.D.	N.D.	N.D.
Benzyl butyl Phthalate (BBP)	N.D.	N.D.	N.D.	N.D.
Dibutyl Phthalate (DBP)	N.D.	N.D.	N.D.	N.D.
Diisobutyl Phthalate(DIBP)	N.D.	N.D.	N.D.	N.D.
Conclusion	Pass	Pass	Pass	Pass

Test Items	Result(mg/kg)			
	9	10	11+12	13
Bis-(2-ethylhexyl) Phthalate (DEHP)	N.D.	N.D.	198	N.D.
Benzyl butyl Phthalate (BBP)	N.D.	N.D.	N.D.	N.D.
Dibutyl Phthalate (DBP)	N.D.	N.D.	N.D.	N.D.
Diisobutyl Phthalate(DIBP)	N.D.	N.D.	145	N.D.
Conclusion	Pass	Pass	Pass	Pass

Test Items	Result(mg/kg)			
	14+15+16	17	18	21
Bis-(2-ethylhexyl) Phthalate (DEHP)	108	N.D.	N.D.	N.D.
Benzyl butyl Phthalate (BBP)	N.D.	N.D.	N.D.	N.D.
Dibutyl Phthalate (DBP)	N.D.	N.D.	N.D.	N.D.
Diisobutyl Phthalate(DIBP)	N.D.	N.D.	N.D.	N.D.
Conclusion	Pass	Pass	Pass	Pass

Test Items	Result(mg/kg)			
	22	23	24	25
Bis-(2-ethylhexyl) Phthalate (DEHP)	N.D.	N.D.	N.D.	N.D.
Benzyl butyl Phthalate (BBP)	N.D.	N.D.	N.D.	N.D.
Dibutyl Phthalate (DBP)	N.D.	N.D.	N.D.	N.D.
Diisobutyl Phthalate(DIBP)	N.D.	N.D.	N.D.	N.D.
Conclusion	Pass	Pass	Pass	Pass

Test Items	Result(mg/kg)			
	26	27	28	29+30
Bis-(2-ethylhexyl) Phthalate (DEHP)	N.D.	N.D.	N.D.	129
Benzyl butyl Phthalate (BBP)	N.D.	N.D.	N.D.	N.D.
Dibutyl Phthalate (DBP)	N.D.	N.D.	N.D.	N.D.
Diisobutyl Phthalate(DIBP)	N.D.	N.D.	N.D.	N.D.
Conclusion	Pass	Pass	Pass	Pass

Test Items	Result(mg/kg)			
	31	33	34	35+111
Bis-(2-ethylhexyl) Phthalate (DEHP)	N.D.	N.D.	N.D.	210
Benzyl butyl Phthalate (BBP)	N.D.	N.D.	N.D.	N.D.
Dibutyl Phthalate (DBP)	N.D.	N.D.	N.D.	N.D.
Diisobutyl Phthalate(DIBP)	N.D.	N.D.	N.D.	N.D.
Conclusion	Pass	Pass	Pass	Pass

Test Items	Result(mg/kg)			
	39	41	44	46
Bis-(2-ethylhexyl) Phthalate (DEHP)	N.D.	N.D.	N.D.	N.D.
Benzyl butyl Phthalate (BBP)	N.D.	N.D.	N.D.	N.D.
Dibutyl Phthalate (DBP)	N.D.	N.D.	N.D.	N.D.
Diisobutyl Phthalate(DIBP)	N.D.	N.D.	N.D.	N.D.
Conclusion	Pass	Pass	Pass	Pass

Test Items	Result(mg/kg)			
	47	49	51	52
Bis-(2-ethylhexyl) Phthalate (DEHP)	N.D.	N.D.	N.D.	N.D.
Benzyl butyl Phthalate (BBP)	N.D.	N.D.	N.D.	N.D.
Dibutyl Phthalate (DBP)	N.D.	N.D.	N.D.	N.D.
Diisobutyl Phthalate(DIBP)	N.D.	N.D.	N.D.	N.D.
Conclusion	Pass	Pass	Pass	Pass

Test Items	Result(mg/kg)			
	53	55	58	59
Bis-(2-ethylhexyl) Phthalate (DEHP)	N.D.	N.D.	N.D.	N.D.
Benzyl butyl Phthalate (BBP)	N.D.	N.D.	N.D.	N.D.
Dibutyl Phthalate (DBP)	N.D.	N.D.	N.D.	N.D.
Diisobutyl Phthalate(DIBP)	N.D.	N.D.	N.D.	N.D.
Conclusion	Pass	Pass	Pass	Pass

Test Items	Result(mg/kg)			
	61	62	64	65
Bis-(2-ethylhexyl) Phthalate (DEHP)	N.D.	N.D.	N.D.	N.D.
Benzyl butyl Phthalate (BBP)	N.D.	N.D.	N.D.	N.D.
Dibutyl Phthalate (DBP)	N.D.	N.D.	N.D.	N.D.
Diisobutyl Phthalate(DIBP)	N.D.	N.D.	N.D.	N.D.
Conclusion	Pass	Pass	Pass	Pass



Test Items	Result(mg/kg)			
	66	67	69	70
Bis-(2-ethylhexyl) Phthalate (DEHP)	N.D.	N.D.	N.D.	N.D.
Benzyl butyl Phthalate (BBP)	N.D.	N.D.	N.D.	N.D.
Dibutyl Phthalate (DBP)	N.D.	N.D.	N.D.	N.D.
Diisobutyl Phthalate(DIBP)	N.D.	N.D.	N.D.	N.D.
Conclusion	Pass	Pass	Pass	Pass

Test Items	Result(mg/kg)			
	72	75	79	80
Bis-(2-ethylhexyl) Phthalate (DEHP)	N.D.	N.D.	N.D.	N.D.
Benzyl butyl Phthalate (BBP)	N.D.	N.D.	N.D.	N.D.
Dibutyl Phthalate (DBP)	N.D.	N.D.	N.D.	N.D.
Diisobutyl Phthalate(DIBP)	N.D.	N.D.	N.D.	N.D.
Conclusion	Pass	Pass	Pass	Pass

Test Items	Result(mg/kg)			
	81	82	83	86
Bis-(2-ethylhexyl) Phthalate (DEHP)	N.D.	N.D.	N.D.	N.D.
Benzyl butyl Phthalate (BBP)	N.D.	N.D.	N.D.	N.D.
Dibutyl Phthalate (DBP)	N.D.	N.D.	N.D.	N.D.
Diisobutyl Phthalate(DIBP)	N.D.	N.D.	N.D.	N.D.
Conclusion	Pass	Pass	Pass	Pass

Test Items	Result(mg/kg)			
	88	91	94	98
Bis-(2-ethylhexyl) Phthalate (DEHP)	N.D.	N.D.	N.D.	N.D.
Benzyl butyl Phthalate (BBP)	N.D.	N.D.	N.D.	N.D.
Dibutyl Phthalate (DBP)	N.D.	N.D.	N.D.	N.D.
Diisobutyl Phthalate(DIBP)	N.D.	N.D.	N.D.	N.D.
Conclusion	Pass	Pass	Pass	Pass

Test Items	Result(mg/kg)			
	101	102	103	104
Bis-(2-ethylhexyl) Phthalate (DEHP)	N.D.	N.D.	N.D.	N.D.
Benzyl butyl Phthalate (BBP)	N.D.	N.D.	N.D.	N.D.
Dibutyl Phthalate (DBP)	N.D.	N.D.	N.D.	N.D.
Diisobutyl Phthalate(DIBP)	N.D.	N.D.	N.D.	N.D.
Conclusion	Pass	Pass	Pass	Pass

Test Items	Result(mg/kg)			
	105	106	107	108
Bis-(2-ethylhexyl) Phthalate (DEHP)	N.D.	N.D.	N.D.	N.D.
Benzyl butyl Phthalate (BBP)	N.D.	N.D.	N.D.	N.D.
Dibutyl Phthalate (DBP)	N.D.	N.D.	N.D.	N.D.
Diisobutyl Phthalate(DIBP)	N.D.	N.D.	N.D.	N.D.
Conclusion	Pass	Pass	Pass	Pass

Test Items	Result(mg/kg)			
	109	115	117	119
Bis-(2-ethylhexyl) Phthalate (DEHP)	N.D.	N.D.	N.D.	N.D.
Benzyl butyl Phthalate (BBP)	N.D.	N.D.	N.D.	N.D.
Dibutyl Phthalate (DBP)	N.D.	N.D.	N.D.	N.D.
Diisobutyl Phthalate(DIBP)	N.D.	N.D.	N.D.	N.D.
Conclusion	Pass	Pass	Pass	Pass

Test Items	Result(mg/kg)			
	120	121	124	125
Bis-(2-ethylhexyl) Phthalate (DEHP)	N.D.	N.D.	N.D.	N.D.
Benzyl butyl Phthalate (BBP)	N.D.	N.D.	N.D.	N.D.
Dibutyl Phthalate (DBP)	N.D.	N.D.	N.D.	N.D.
Diisobutyl Phthalate(DIBP)	N.D.	N.D.	N.D.	N.D.
Conclusion	Pass	Pass	Pass	Pass

Test Items	Result(mg/kg)			
	128	129	130	131
Bis-(2-ethylhexyl) Phthalate (DEHP)	N.D.	N.D.	N.D.	N.D.
Benzyl butyl Phthalate (BBP)	N.D.	N.D.	N.D.	N.D.
Dibutyl Phthalate (DBP)	N.D.	N.D.	N.D.	N.D.
Diisobutyl Phthalate(DIBP)	N.D.	N.D.	N.D.	N.D.
Conclusion	Pass	Pass	Pass	Pass

Test Items	Result(mg/kg)			
	132+139	133	136	137
Bis-(2-ethylhexyl) Phthalate (DEHP)	168	N.D.	N.D.	N.D.
Benzyl butyl Phthalate (BBP)	N.D.	N.D.	N.D.	N.D.
Dibutyl Phthalate (DBP)	N.D.	N.D.	N.D.	N.D.
Diisobutyl Phthalate(DIBP)	N.D.	N.D.	N.D.	N.D.
Conclusion	Pass	Pass	Pass	Pass

Test Items	Result(mg/kg)			
	138	140	142	144
Bis-(2-ethylhexyl) Phthalate (DEHP)	N.D.	N.D.	N.D.	N.D.
Benzyl butyl Phthalate (BBP)	N.D.	N.D.	N.D.	N.D.
Dibutyl Phthalate (DBP)	N.D.	N.D.	N.D.	N.D.
Diisobutyl Phthalate(DIBP)	N.D.	N.D.	N.D.	N.D.
Conclusion	Pass	Pass	Pass	Pass

Test Items	Result(mg/kg)			
	147	149	150	151
Bis-(2-ethylhexyl) Phthalate (DEHP)	N.D.	N.D.	N.D.	N.D.
Benzyl butyl Phthalate (BBP)	N.D.	N.D.	N.D.	N.D.
Dibutyl Phthalate (DBP)	N.D.	N.D.	N.D.	N.D.
Diisobutyl Phthalate(DIBP)	N.D.	N.D.	N.D.	N.D.
Conclusion	Pass	Pass	Pass	Pass

Test Items	Result(mg/kg)			
	152	155	157	161
Bis-(2-ethylhexyl) Phthalate (DEHP)	N.D.	N.D.	N.D.	N.D.
Benzyl butyl Phthalate (BBP)	N.D.	N.D.	N.D.	N.D.
Dibutyl Phthalate (DBP)	N.D.	N.D.	N.D.	N.D.
Diisobutyl Phthalate(DIBP)	N.D.	N.D.	N.D.	N.D.
Conclusion	Pass	Pass	Pass	Pass

Test Items	Result(mg/kg)			
	162	164	166	167
Bis-(2-ethylhexyl) Phthalate (DEHP)	N.D.	N.D.	N.D.	N.D.
Benzyl butyl Phthalate (BBP)	N.D.	N.D.	N.D.	N.D.
Dibutyl Phthalate (DBP)	N.D.	N.D.	N.D.	N.D.
Diisobutyl Phthalate(DIBP)	N.D.	N.D.	N.D.	N.D.
Conclusion	Pass	Pass	Pass	Pass

Test Items	Result(mg/kg)			
	168	169	171	172
Bis-(2-ethylhexyl) Phthalate (DEHP)	N.D.	N.D.	N.D.	N.D.
Benzyl butyl Phthalate (BBP)	N.D.	N.D.	N.D.	N.D.
Dibutyl Phthalate (DBP)	N.D.	N.D.	N.D.	N.D.
Diisobutyl Phthalate(DIBP)	N.D.	N.D.	N.D.	N.D.
Conclusion	Pass	Pass	Pass	Pass

Test Items	Result(mg/kg)			
	174	177	178	179
Bis-(2-ethylhexyl) Phthalate (DEHP)	N.D.	N.D.	N.D.	N.D.
Benzyl butyl Phthalate (BBP)	N.D.	N.D.	N.D.	N.D.
Dibutyl Phthalate (DBP)	N.D.	N.D.	N.D.	N.D.
Diisobutyl Phthalate(DIBP)	N.D.	N.D.	N.D.	N.D.
Conclusion	Pass	Pass	Pass	Pass

Test Items	Result(mg/kg)			
	181	185	186	187
Bis-(2-ethylhexyl) Phthalate (DEHP)	N.D.	N.D.	N.D.	N.D.
Benzyl butyl Phthalate (BBP)	N.D.	N.D.	N.D.	N.D.
Dibutyl Phthalate (DBP)	N.D.	N.D.	N.D.	N.D.
Diisobutyl Phthalate(DIBP)	N.D.	N.D.	N.D.	N.D.
Conclusion	Pass	Pass	Pass	Pass

Test Items	Result(mg/kg)			
	188	189	191	194
Bis-(2-ethylhexyl) Phthalate (DEHP)	N.D.	N.D.	N.D.	N.D.
Benzyl butyl Phthalate (BBP)	N.D.	N.D.	N.D.	N.D.
Dibutyl Phthalate (DBP)	N.D.	N.D.	N.D.	N.D.
Diisobutyl Phthalate(DIBP)	N.D.	N.D.	N.D.	N.D.
Conclusion	Pass	Pass	Pass	Pass

Test Items	Result(mg/kg)			
	195	199	200	203
Bis-(2-ethylhexyl) Phthalate (DEHP)	N.D.	N.D.	N.D.	N.D.
Benzyl butyl Phthalate (BBP)	N.D.	N.D.	N.D.	N.D.
Dibutyl Phthalate (DBP)	N.D.	N.D.	N.D.	N.D.
Diisobutyl Phthalate(DIBP)	N.D.	N.D.	N.D.	N.D.
Conclusion	Pass	Pass	Pass	Pass

Test Items	Result(mg/kg)			
	205	209	210	212
Bis-(2-ethylhexyl) Phthalate (DEHP)	N.D.	N.D.	N.D.	N.D.
Benzyl butyl Phthalate (BBP)	N.D.	N.D.	N.D.	N.D.
Dibutyl Phthalate (DBP)	N.D.	N.D.	N.D.	N.D.
Diisobutyl Phthalate(DIBP)	N.D.	N.D.	N.D.	N.D.
Conclusion	Pass	Pass	Pass	Pass

Test Items	Result(mg/kg)			
	213	214	215	216
Bis-(2-ethylhexyl) Phthalate (DEHP)	N.D.	N.D.	N.D.	N.D.
Benzyl butyl Phthalate (BBP)	N.D.	N.D.	N.D.	N.D.
Dibutyl Phthalate (DBP)	N.D.	N.D.	N.D.	N.D.
Diisobutyl Phthalate(DIBP)	N.D.	N.D.	N.D.	N.D.
Conclusion	Pass	Pass	Pass	Pass

Test Items	Result(mg/kg)			
	220	221	223	224
Bis-(2-ethylhexyl) Phthalate (DEHP)	N.D.	N.D.	N.D.	N.D.
Benzyl butyl Phthalate (BBP)	N.D.	N.D.	N.D.	N.D.
Dibutyl Phthalate (DBP)	N.D.	N.D.	N.D.	N.D.
Diisobutyl Phthalate(DIBP)	N.D.	N.D.	N.D.	N.D.
Conclusion	Pass	Pass	Pass	Pass

Note: 1.N.D. = Not Detected (<MDL) MDL = Method Detection Limit  
 1mg/kg = 1ppm =0.0001% / =Not Regulated or Not Applicable  
 2. BL = Below the XRF screening limit  
 IN = Further chemical test will be conducted when the screening result inconclusive  
 OL = Further chemical test will be conducted while the result is above the screening limit.  
 3. For metal samples, the sample is negative for Cr(VI), if the Cr(VI) concentration is less than 0.10  $\mu\text{g}/\text{cm}^2$ , the coating is considered a non- Cr(VI) based coating;  
 The sample is positive for Cr(VI), if the Cr(VI) concentration is greater than 0.13  $\mu\text{g}/\text{cm}^2$ ,  
 The sample coating is considered to contain Cr(VI);  
 The result is considered to be inconclusive, the Cr(VI) concentration is between the 0.10  $\mu\text{g}/\text{cm}^2$  and 0.13  $\mu\text{g}/\text{cm}^2$ , unavoidable coating variations may influence the determination.  
 Because the storage condition and production date of the sample are not known, the test results of the sample of hexavalent chromium can only represent the state of hexavalent chromium in the samples tested.

Remark: 1. When conducting the test for PBBs&PBDEs, XRF was introduced to screen Br Exclusively; When conducting the test for Hexavalent Chromium, XRF was introduced to screen Chromium exclusively.  
 2. According to the client's statement , the material of the sample(s) comply with RoHS directive 2011/65/EU Annex III Exemption, Corresponding exemption clause:  
 #1 6(c) Lead is exempted as copper alloy containing up to 4% lead by weight .  
 #2 7(c)-I Lead is exempted as Electrical and electronic components containing lead in a glass or ceramic other than dielectric ceramic in capacitors, e.g. piezoelectronic devices, or in a glass or ceramic matrix compound.  
 #3 7(a) Lead is exempted as Lead in high melting temperature type solders (i.e. lead- based alloys containing 85 % by weight or more lead).  
 3. Part No.177 Resubmitted Date: Oct. 20, 2022.

**Test Method:**

When screening results exceed the XRF screening limit in IEC 62321-3-1: 2013, further use of chemical methods are required to test the Lead(Pb), Cadmium(Cd), Mercury(Hg), Hexavalent Chromium(Cr(VI)), Polybrominated Biphenyls(PBBs) and Polybrominated Diphenyl Ethers(PBDEs)

1. XRF screening limits in mg/kg for regulated elements according to IEC 62321-3-1:2013

Element	Limit of IEC 62321-3-1:2013 (mg/kg)		
	Polymers	Metals	Composite material
Pb	$BL \leq (700-3\sigma) < X$ $< (1300+3\sigma) \leq OL$	$BL \leq (700-3\sigma) < X$ $< (1300+3\sigma) \leq OL$	$BL \leq (500-3\sigma) < X$ $< (1500+3\sigma) \leq OL$
Cd	$BL \leq (70-3\sigma) < X <$ $(130+3\sigma) \leq OL$	$BL \leq (70-3\sigma) < X <$ $(130+3\sigma) \leq OL$	$LOD < X < (150+3\sigma)$ $\leq OL$
Hg	$BL \leq (700-3\sigma) < X$ $< (1300+3\sigma) \leq OL$	$BL \leq (700-3\sigma) < X$ $< (1300+3\sigma) \leq OL$	$BL \leq (500-3\sigma) < X$ $< (1500+3\sigma) \leq OL$
Cr	$BL \leq (700-3\sigma) < X$	$BL \leq (700-3\sigma) < X$	$BL \leq (500-3\sigma) < X$
Br	$BL \leq (300-3\sigma) < X$	/	$BL \leq (250-3\sigma) < X$

Note: BL= Below the XRF screening limit    OL=Over the XRF screening limit  
 X=The symbol "X" marks the region where further investigation is necessary.  
 $3\sigma$  =The reproducibility of analytical instruments    LOD= Detection limit

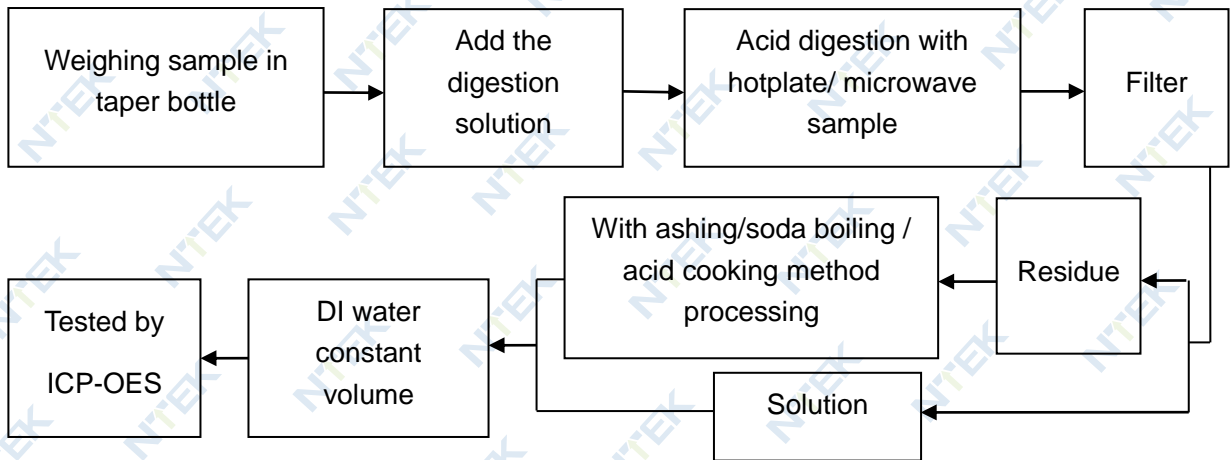
## 2. Chemical Test

Test item	Test method	Test instrument	MDL	Limit <sup>△</sup>
Lead (Pb)	IEC 62321-5:2013 Ed.1.0	ICP-OES	10 mg/kg	1000 mg/kg
Cadmium (Cd)	IEC 62321-5:2013 Ed.1.0	ICP-OES	10 mg/kg	100 mg/kg
Mercury (Hg)	IEC 62321-4:2013+AMD1:2017	ICP-OES	10 mg/kg	1000 mg/kg
Hexavalent Chromium(Cr(VI))	IEC 62321-7-1:2015 Ed.1.0	UV-Vis	0.10 $\mu\text{g}/\text{cm}^2$	1000 mg/kg
	IEC 62321-7-2:2017 Ed.1.0		8 mg/kg	
Polybrominated Biphenyls(PBBs)	IEC 62321-6:2015 Ed.1.0	GC-MS	100 mg/kg	1000 mg/kg
Polybrominated, Diphenyl Ethers(PBDEs)	IEC 62321-6:2015 Ed.1.0	GC-MS	100 mg/kg	1000 mg/kg
Bis-(2-ethylhexyl) Phthalate (DEHP)	IEC 62321-8:2017 Ed.1.0	GC-MS	50 mg/kg	1000 mg/kg
Benzyl butyl Phthalate (BBP)	IEC 62321-8:2017 Ed.1.0	GC-MS	50 mg/kg	1000 mg/kg
Dibutyl Phthalate (DBP)	IEC 62321-8:2017 Ed.1.0	GC-MS	50 mg/kg	1000 mg/kg
Diisobutyl Phthalate (DIBP)	IEC 62321-8:2017 Ed.1.0	GC-MS	50 mg/kg	1000 mg/kg

<sup>△</sup>Limit is from RoHS Directive (EU) 2015/863 amending Annex II to Directive 2011/65/EU.

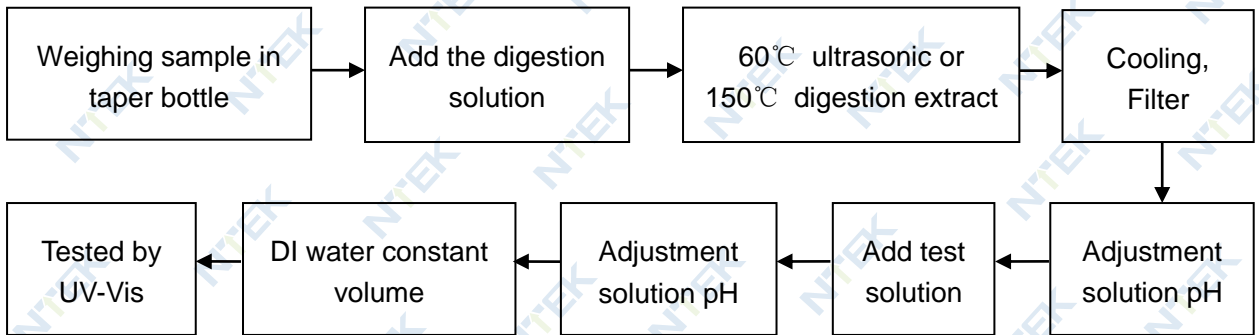
**Test Flow:**

1. Lead(Pb), Cadmium(Cd), Mercury (Hg)

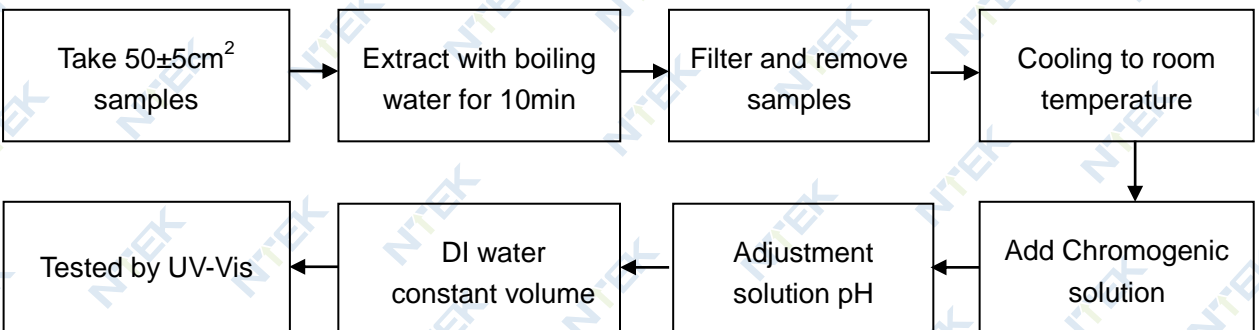


2. Hexavalent Chromium(Cr(VI))

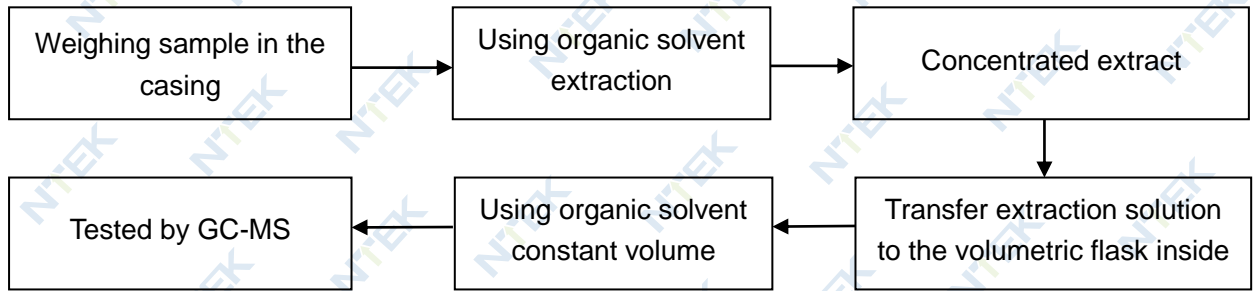
2.1 Non- metal sample(s)



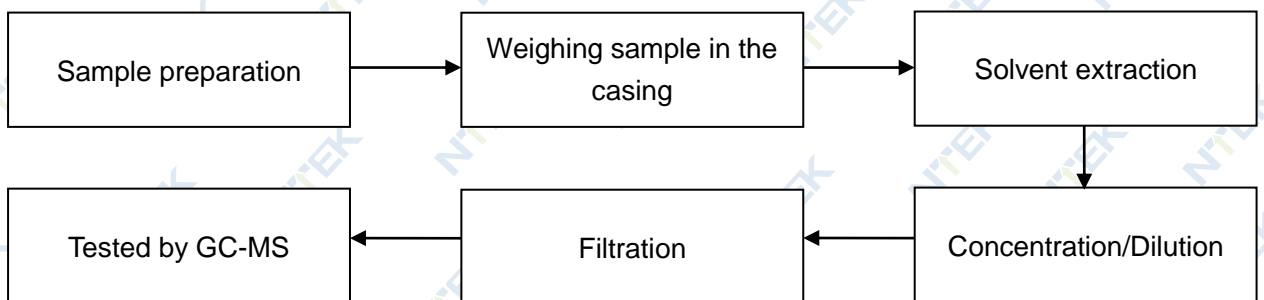
2.2 Metal sample(s)



3. PBBs/ PBDEs



4. Phthalates





**Sample photo(s):**



Fig.1



Fig.2



Fig.3



Fig.4

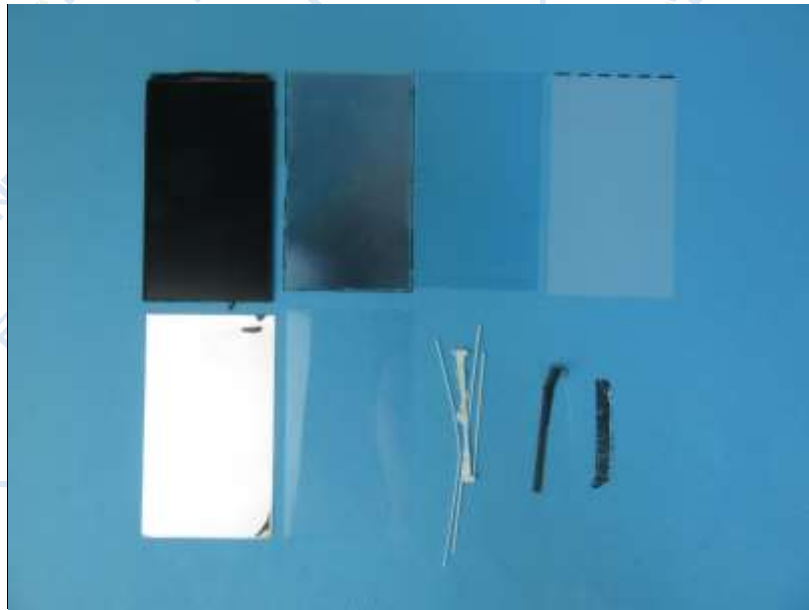


Fig.5

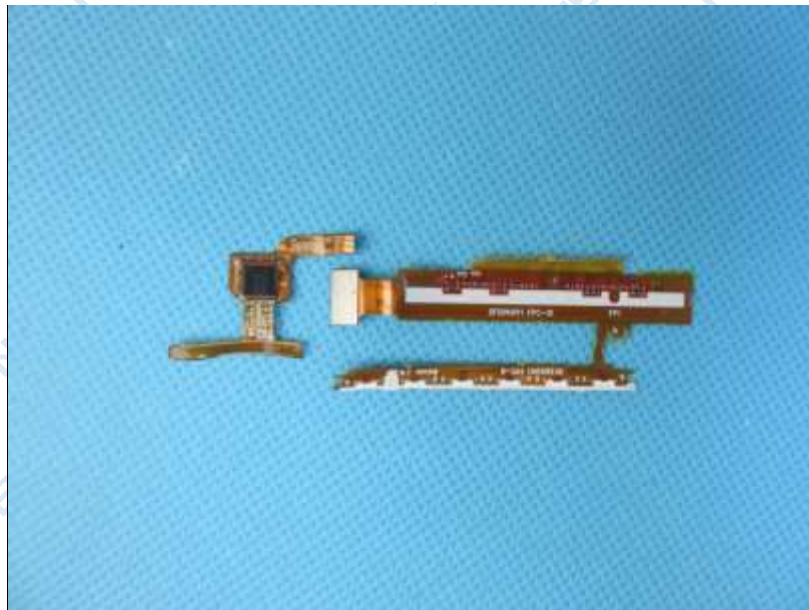


Fig.6



Fig.7



Fig.8



Fig.9

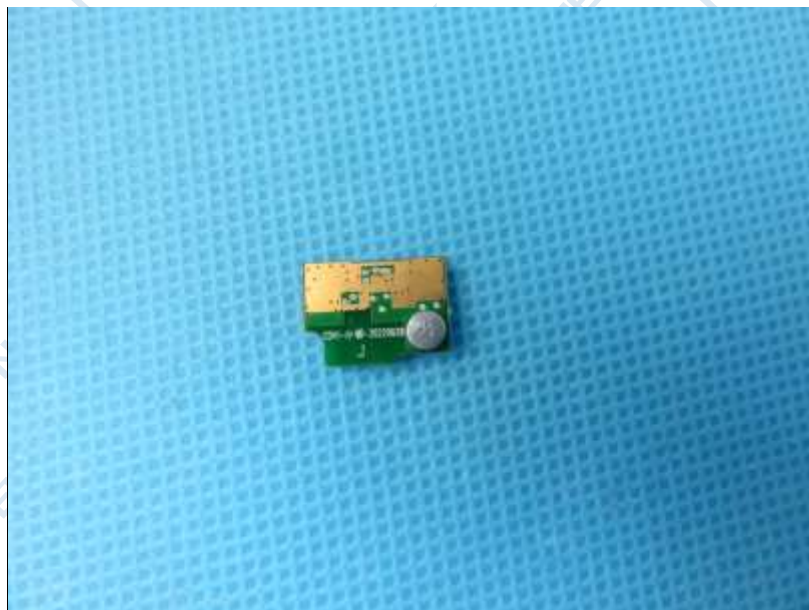


Fig.10



Fig.11

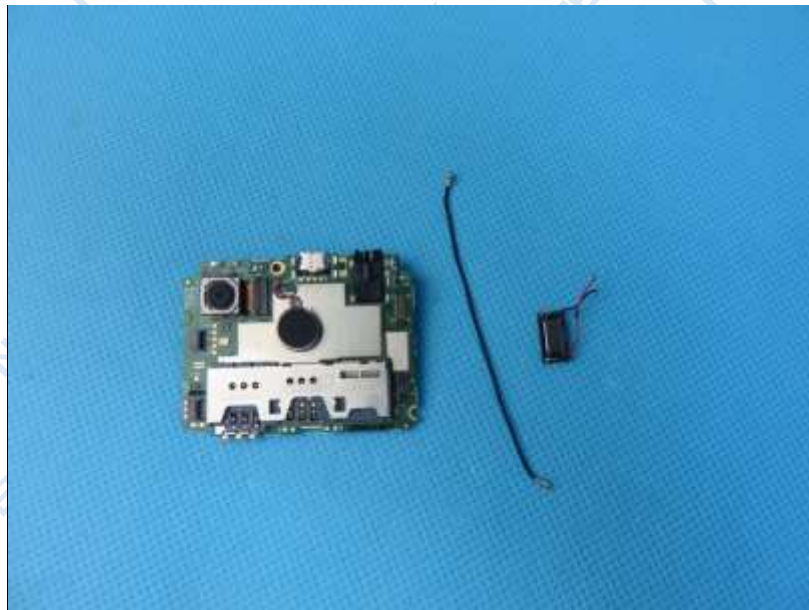


Fig.12



Fig.13



Fig.14



Fig.15



Fig.16





Fig.17



Fig.18



Fig.19

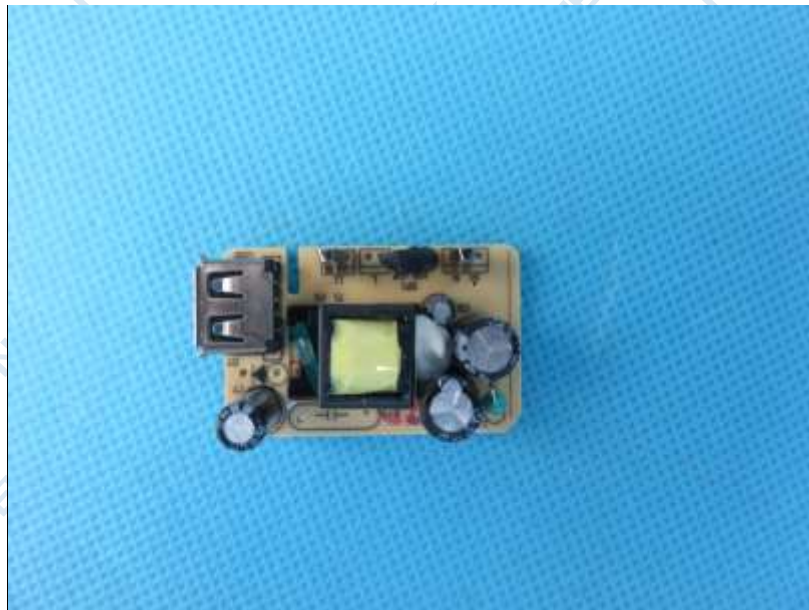


Fig.20

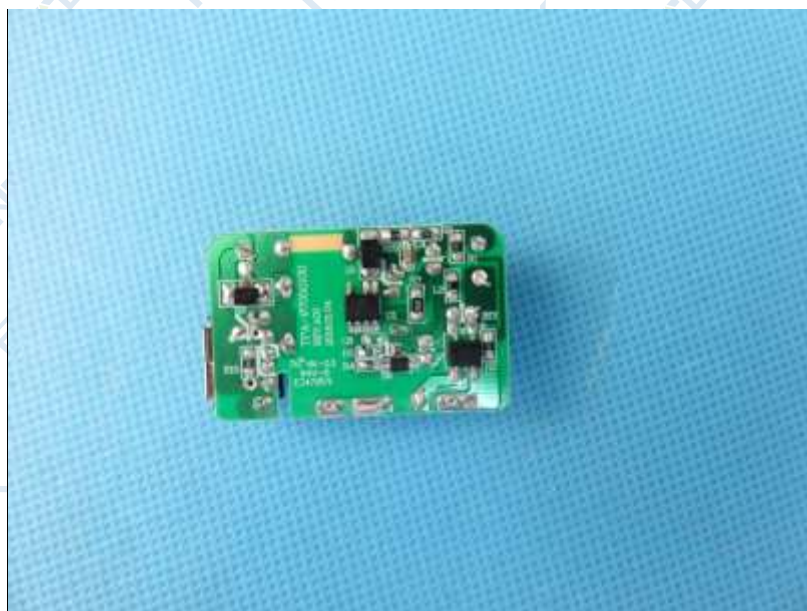


Fig.21



Fig.22



Fig.23



Fig.24



Fig.25

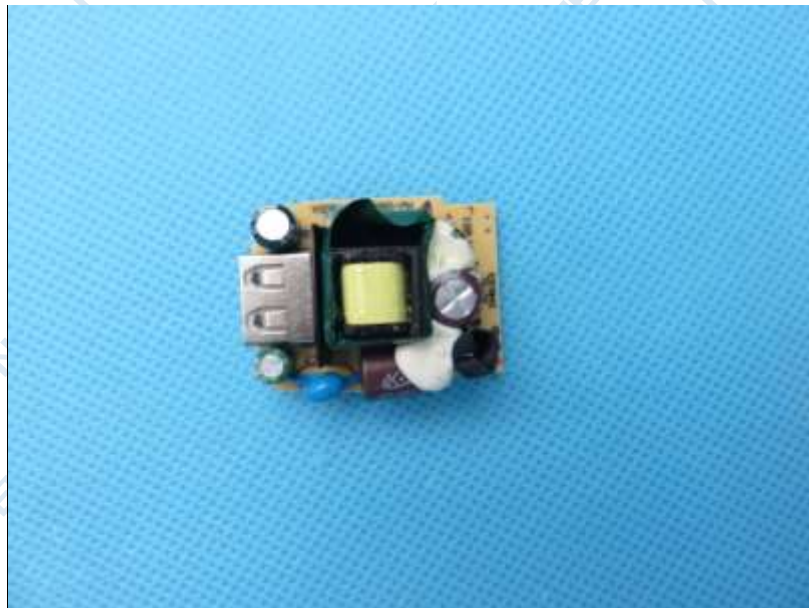


Fig.26

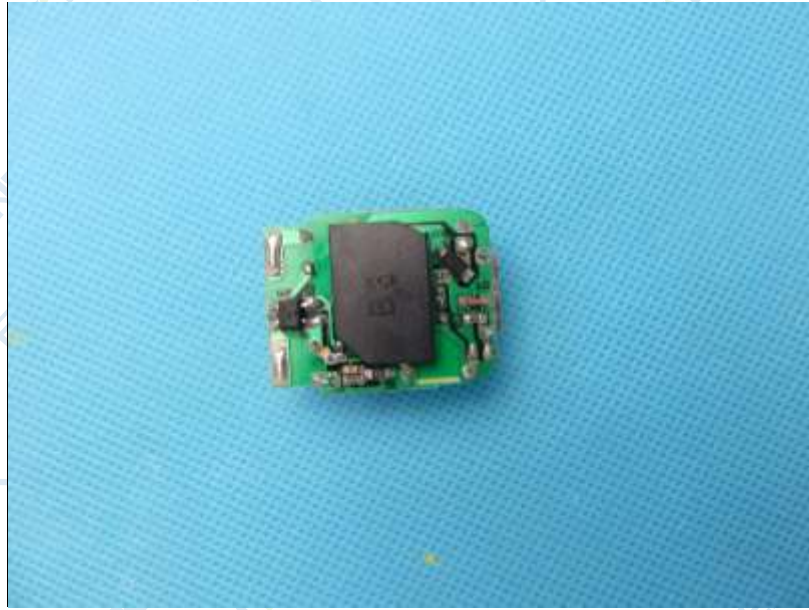


Fig.27



Fig.28

\*\*\*\*End of Report\*\*\*\*

The test results or data in this report will be used only for education, scientific research, enterprise product development and internal quality control or other purposes.

The test report is effective only with both signature and specialized stamp, The result(s) shown in this report refer only to the sample(s) tested. Without written approval of NTEK, this report can't be reproduced except in full.